



WWW.CHEWSURGERY.CO.UK

WE REGULARLY UPDATE THE PRACTICE WEB SITE.

Recent additions including Teen Zone, advice and guidance for young people, details of immunisation programmes including HPV and MMR and information about community transportation and patient group meetings to name a few.

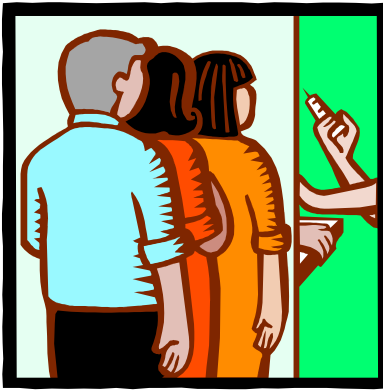
There have been many changes at the Practice during 2007/08

- **www.chewsurgery.co.uk – Practice web site goes live**
- Online booking of appointments & repeat ordering of prescriptions available also Patient information leaflets/ information about the practice our services and local community facilities
- Introduction of Patient Consultation Group, including representatives from the Chew Valley and practice area.
- Expansion of Practice Nursing Team including appointment of a lead nurse and prescription dispensers
- Review of the telephone systems, and the way we work, offering access to the clinical team. Introduction of telephone triage, ensuring those with the greatest medical need are assessed and seen promptly.
- Patients are now able to book appointments up to 6 weeks in advance, plus Choose and Book facilities for secondary care appointments.
- Baby changing facilities introduced in the disabled WC
- Health promotion events, fundraising and talks, more access to the medical team to manage ongoing chronic conditions.
- Automated check in system & Updated patient information folder in reception.
- Regular health promotion campaigns, more GP and Nurse appointments available.
- Chews Health Life style and weight management, for details of the next course please ask at reception.
- Introduction of commuter clinics: Open Saturday mornings until 11am and 7.30pm Wednesday evenings for pre-booked appointments, TV Screen with patient information from Department of Health in reception
- Regular Website updates, Use of a wheelchair for patients, new Respiratory software linking test results directly into patient record.
- New clinical technology linking ECG and other facilities direct into the patient record.
- Links with Charitable organisations, donating medical equipment and other items.
- Use of a Wheelchair for patients at the Practice.
- Improvements to the way we run and manage our Flu Clinics
- Successful home prescription delivery service
- **WHAT WOULD YOU LIKE TO SEE NEXT?**

**WE NEED YOUR VIEWS, SUPPORT US IN PROVIDING
THE SERVICES YOU NEED.
WRITE, EMAIL OR
LEAVE SUGGESTIONS IN RECEPTION,
WE SHALL TRY TO RESPOND TO AS MANY AS WE CAN.
CHEW MEDICAL PRACTICE 01275 332420
WWW.CHEWSURGERY.CO.UK**



VACCINATION TIME



This certainly is a busy time of year at the practice for calling and recalling patients for vaccinations, including Flu, MMR and the recently introduced HPV.

If you have received a letter asking you or a member of your family to come in for a vaccination think carefully if considering declining the opportunity.

No meningitis C deaths were recorded in under-19s in the UK in 2007

(according to the DoH).

This is the first year without deaths since records began in the late 19th century. Previously, meningitis C killed up to 78 under-19s a year, and left many survivors with brain damage or amputations.

But the latest statistics, taken from the DoH's annual immunisation report, show that mass vaccination with the meningitis C conjugate vaccine has all but wiped out the disease. The vaccine was added to the routine childhood immunisation programme in the UK in 1999 and, since 2000, is thought to have prevented over 500 deaths. The programme is targeted at the under-20s. However, young adults between 20 and 24 and all first-year college and university students are advised to have the vaccination.

Human Papilloma Virus Vaccine **(commonly known as the HPV vaccine).**



A national campaign to provide young women with protection against HPV 16 and 18 was announced by the Department of Health in May 2008 through the provision of a HPV vaccination.

From autumn 2008, the vaccine will be offered every year to 12- to 13-year-old girls (school year 8).

A three-year catch-up programme will also start from autumn 2008 and will offer the vaccine to older girls aged 13-18. The first part of the catch-up campaign provides funding for the HPV vaccination to be made available to 17 - 18 year old women in 2008/09. i.e. those born between 01.09.1990 and 31.08.1991. In early November 2008, letters are being sent to all girls registered with the surgery in this age group inviting them to receive the vaccination. If you are in this 17-18 age group and do not receive the letter please contact the surgery.

Further catch-up campaigns will follow to ensure all girls are offered the vaccination.

For more information on HPV vaccine please get in touch with your health visitor, practice nurse, GP or see

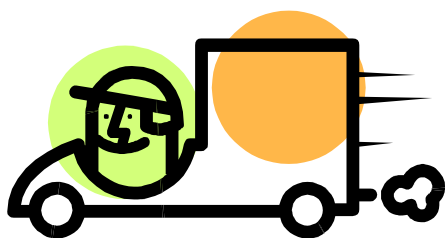
www.immunisation.nhs.uk/Vaccines/HPV

Dispensary receives recognition

from B&NES Primary Care Trust



The practice has been awarded with the Dispensary Service Quality Scheme Award, as formal recognition for high Standard of patient care and governance in dispensing medication.



The Practice dispenses up to 13,000 individual items per month for registered patients and provides an effective home delivery service for hundreds of patients who have difficulty in obtain their repeat medication monthly.

Is it time for a change of habit?

FROM SATURDAY THE 15TH NOVEMBER THE PRACTICE WILL BE PROVIDING SATURDAY MORNING APPOINTMENTS FOR SMOKING CESSATION ADVICE



CONGRATULATIONS TO ANNES YEATES HEALTH CARE ASSISTANT , ANNE HAS BEEN AWARDED WITH THE MOST SUCCESSFUL SMOKING CESSATION ADVISOR IN THE WHOLE OF B&NES PCT 2008

START TO QUIT TODAY, MAKE AN APPOINTMENT AT RECEPTION OR ASK FOR ONE OF OUR ADVISORS TO GET IN TOUCH.

CHEWS HEALTH

A Chew Medical Practice initiative combining dietary, fitness and lifestyle advice to support and encourage healthier lifestyles has been very successful with over 45 participants since January 2008, with a combined estimated weight loss of 83kg! A new course will be starting soon, and is free to patients of Chew Medical Practice. The course is lead by the Nursing team, with input from dietician, and fitness experts. Please ask at reception for details and how to sign up.



UNABLE TO GET TO THE PRACTICE DURING THE WORKING DAY?

THE SURGERY IS NOW OPEN WITH PRE-BOOKABLE APPOINTMENTS UNTIL 7.30PM WEDNESDAY EVENINGS AND 12.PM SATURDAY MORNINGS.

Please book online for an appointment or via Reception.



AUTUMN/WINTER

2008

CHEW MEDICAL PRACTICE

NEWSFLASH

NEW PROPOSALS THREATEN AN END TO DISPENSING BY DOCTORS!

The Government is thinking about changing rules over where patients can get their medications. If the rules change patients may no longer be allowed to get their medicines from Chew Medical Practice.

The new proposals threaten redundancies in rural areas and reduction of service. *Since half of dispensing households included at least one person who is over 65, and one in six has a disabled person in their household, it is not surprising that: 95% of surveyed dispensing patients would find it difficult or inconvenient if their surgery stopped dispensing.

**PLEASE HELP US STAND UP FOR PATIENT CHOICE
WRITE AND GIVE YOUR VIEW BEFORE 20/11/08 TO:**

Gillian Farnfield

MPI– Community Pharmacy Policy

4th Floor, Skipton House

80 London Road

SE1 6LH

Or email response and comments to: pwpccons@dh.gsi.gov.uk

*At the practice we will gladly forward your
written response on your behalf*

It is very important that you express your personal view and opinion about whether you should be able to receive your medicines from your doctor. The nearest chemist to the practice is located in Queens Road, Withywood. The Government wants to hear about your personal experience as a patient of a dispensing practice.

For further information on the Pharmacy white paper please go to www.dispensingdoctor.org *Statistics provided by the Dispensing Doctors Association.

PLEASE SIGN PETITION IN RECEPTION



Chew Medical Practice